

INNER STREET

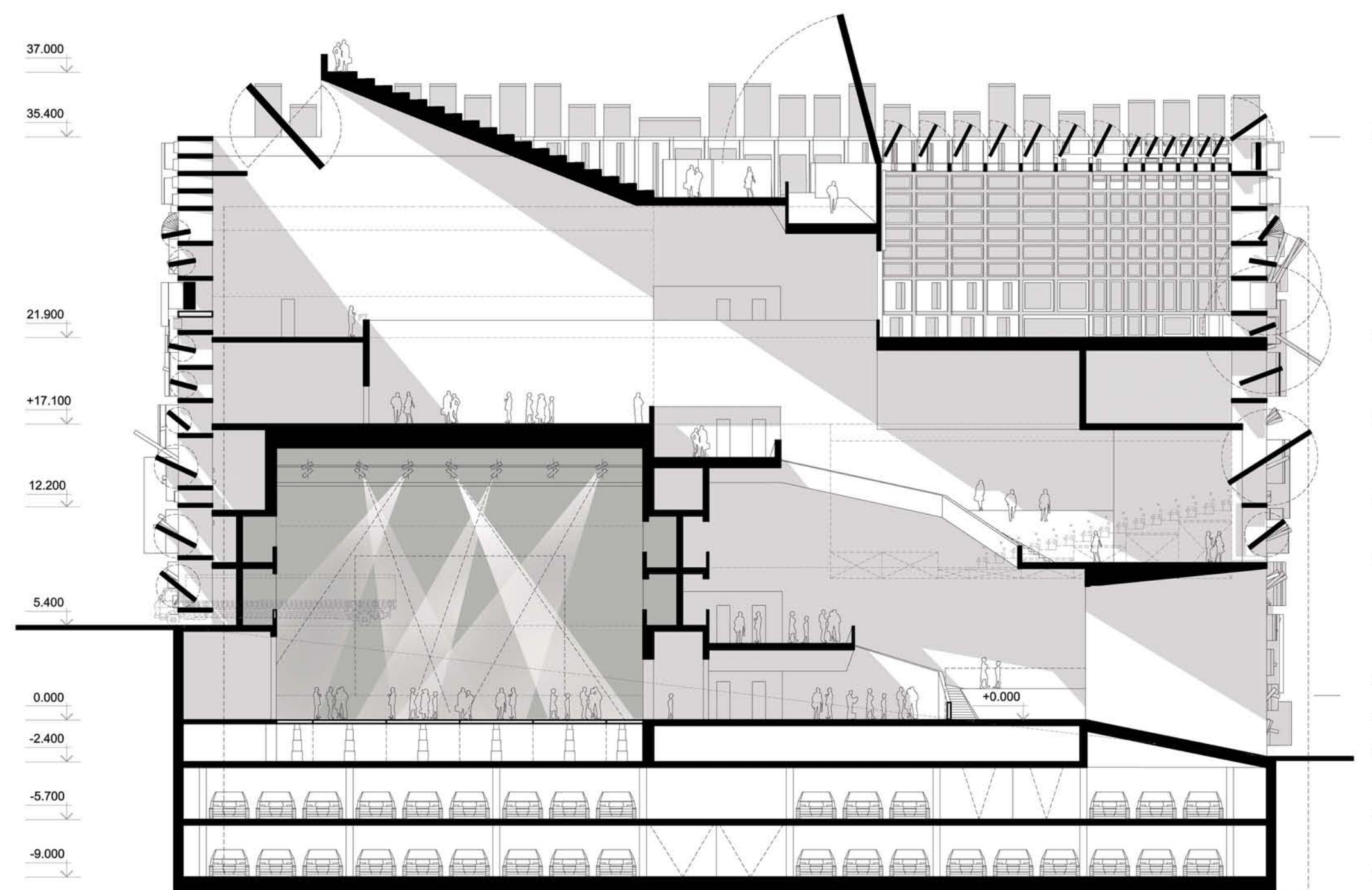
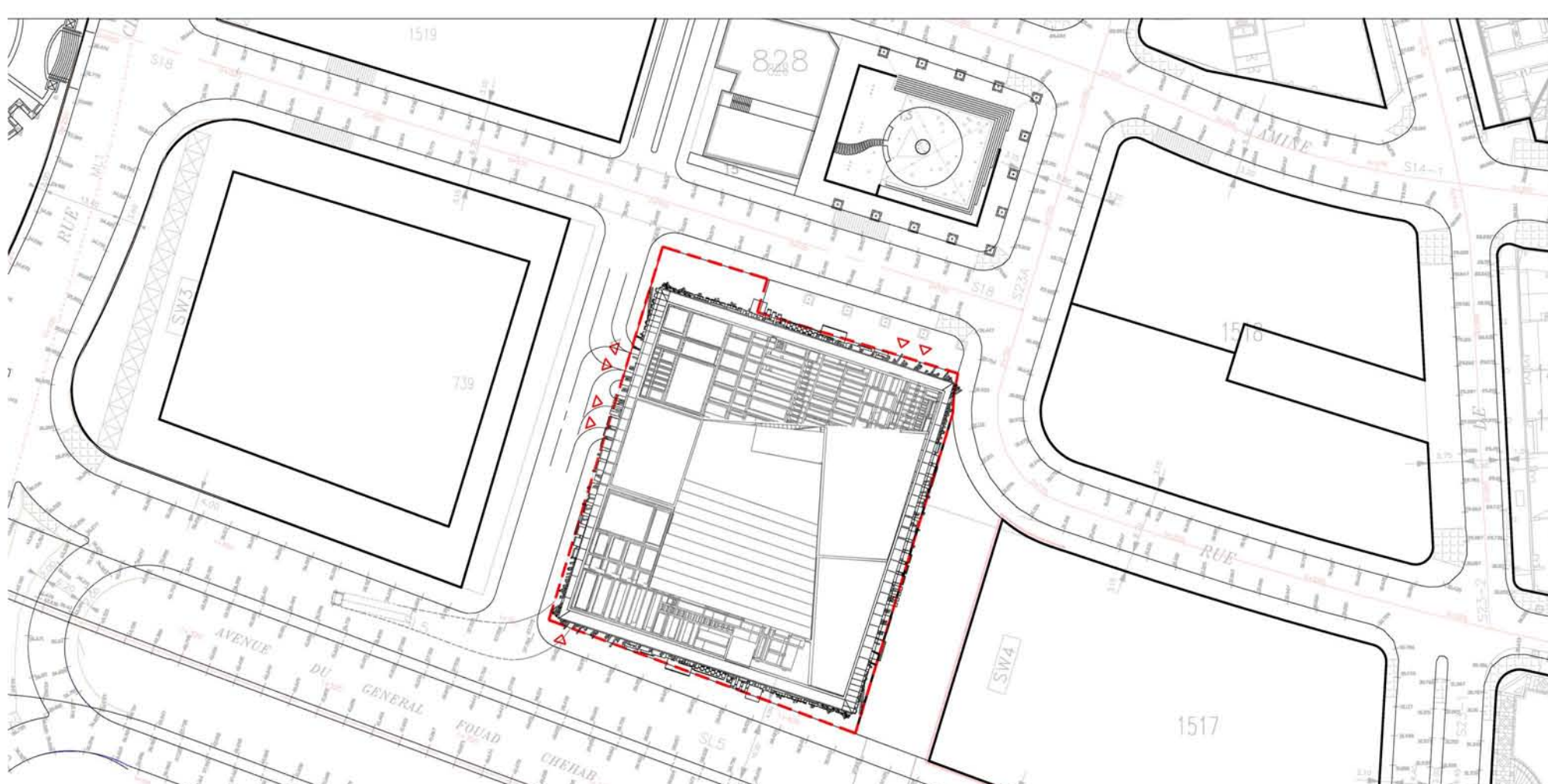
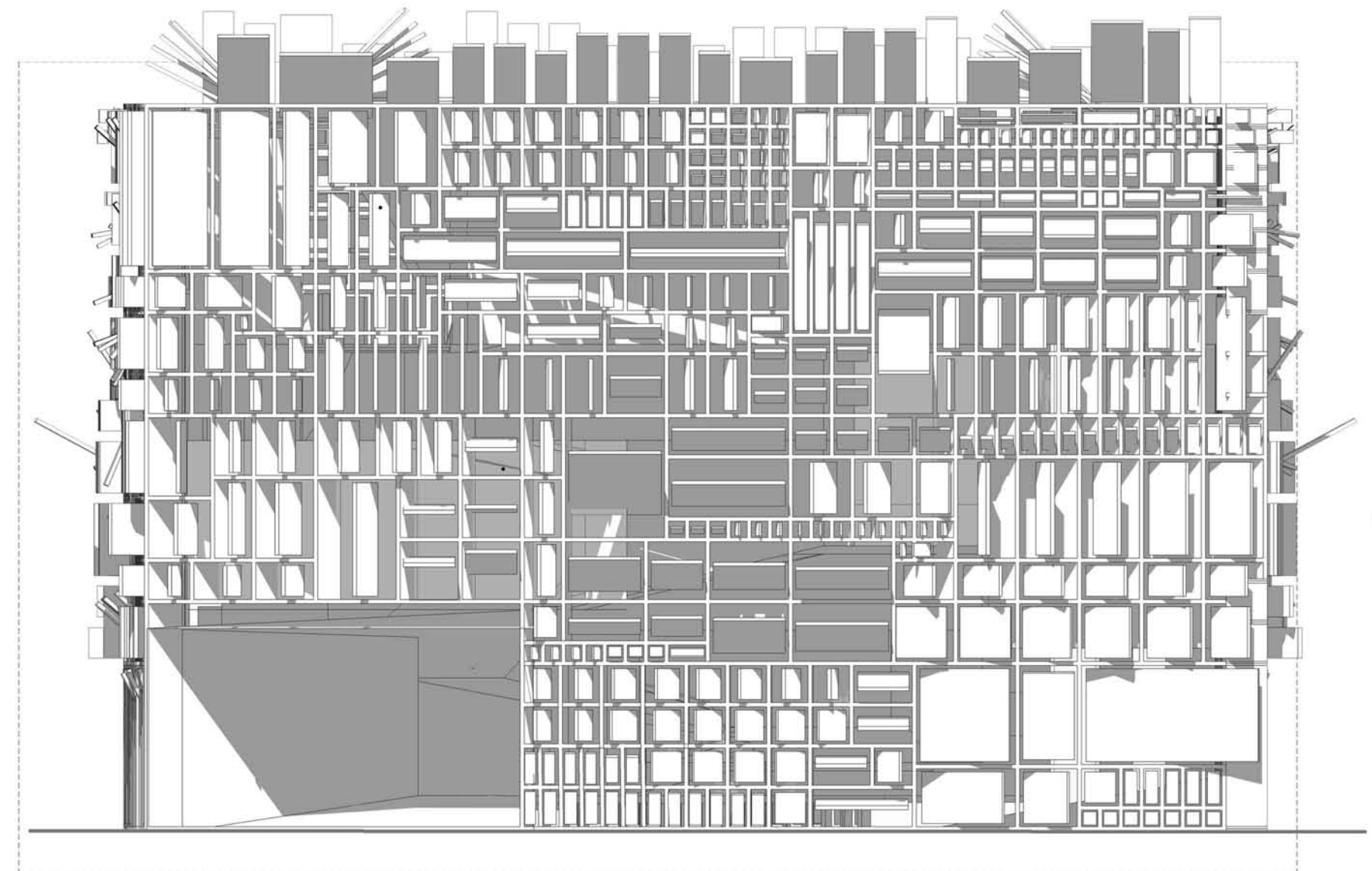
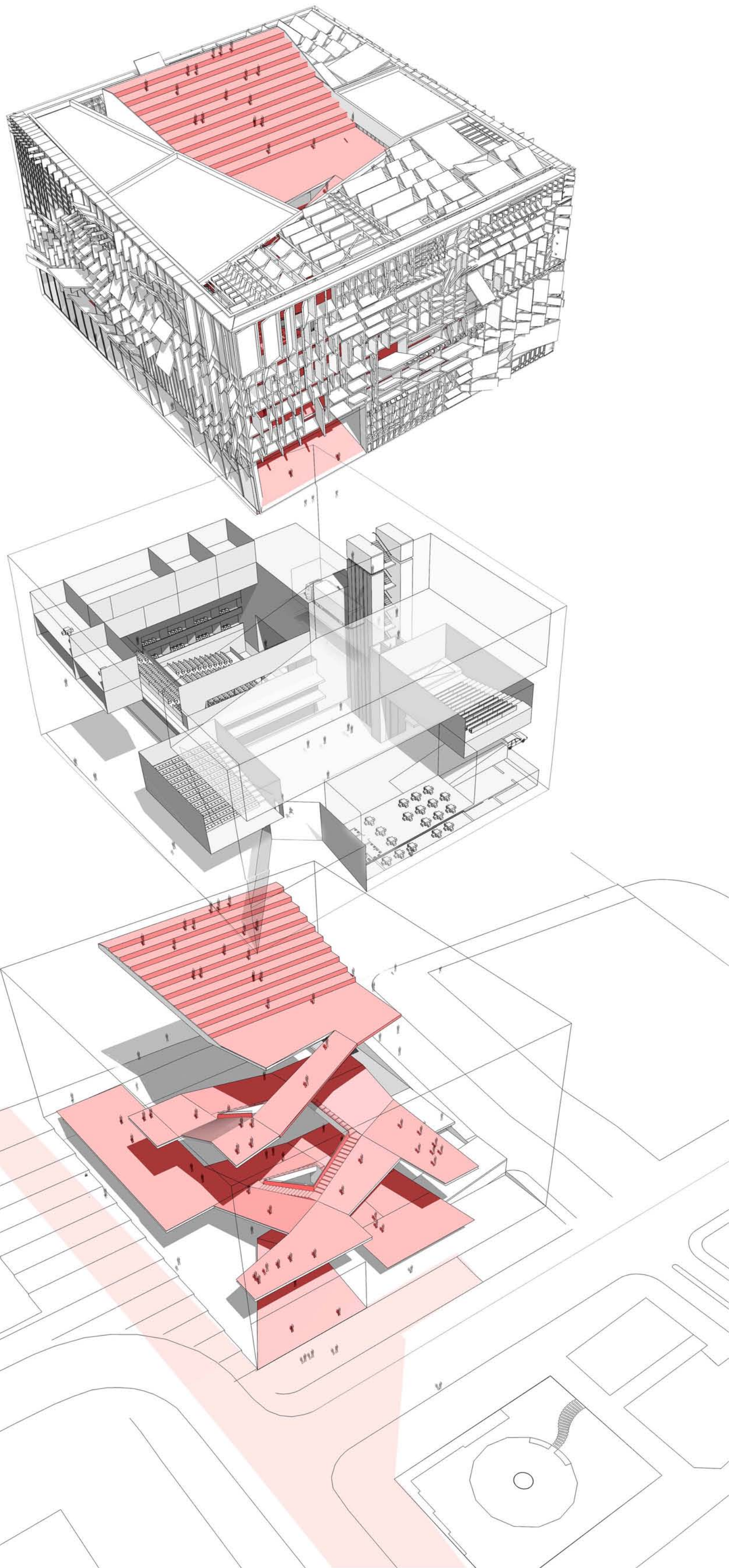
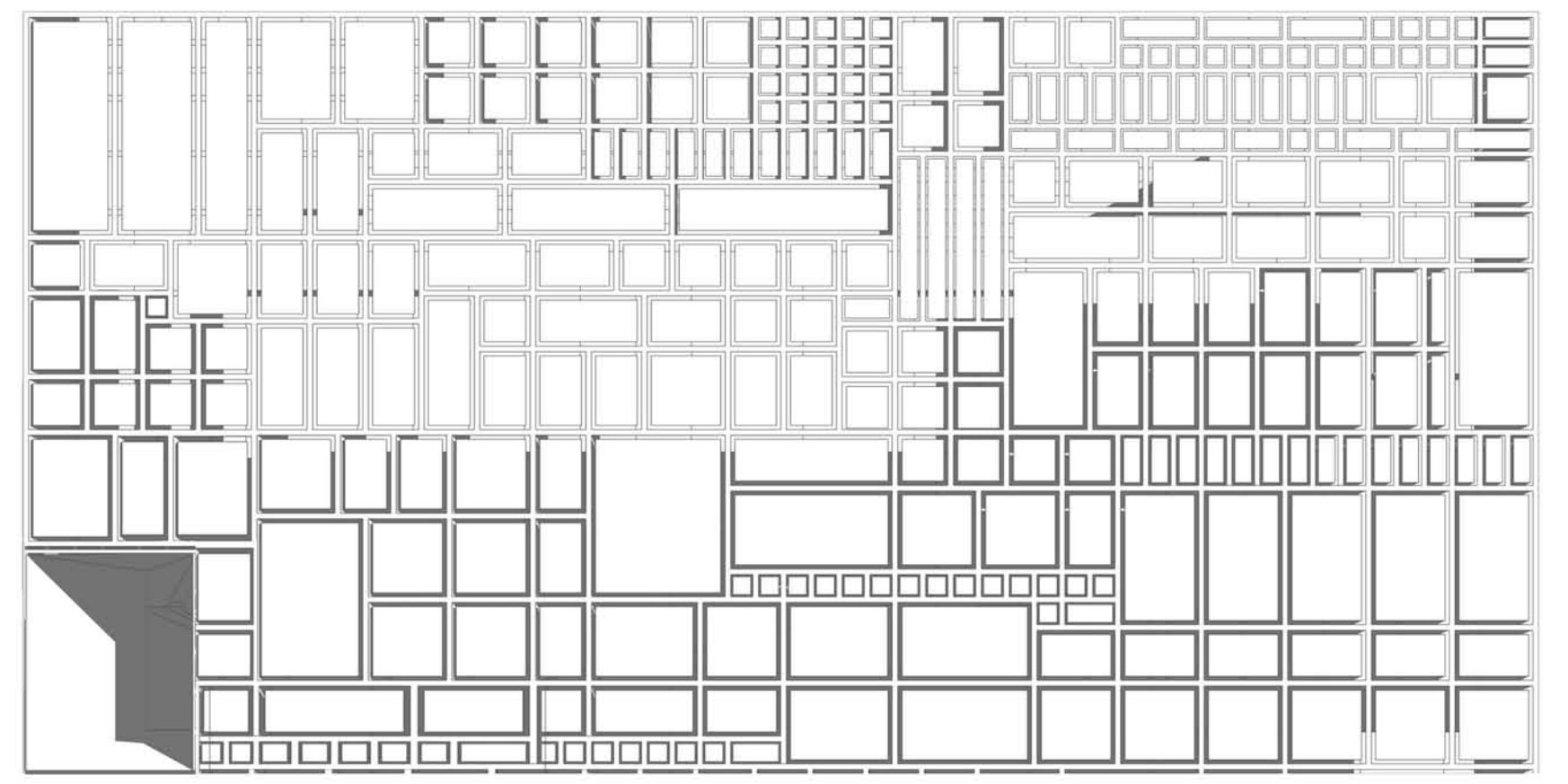
Wide inner street rises from the entrance to the House to amphitheatre on roof. This open for Beirut residents public place, becomes a new center of communications and connection with a culture. Street space in itself can be used for every kind of urban culture activity - lectures, exhibitions and children lessons. First floor combines in united space of covered town square by transformation of main hall floor. Small hall, cinema, library and exhibition hall are situated around the central public space of the street, which turns into the hall under the open sky. Accessible street space connects different functions as well as ordinary town street would do.

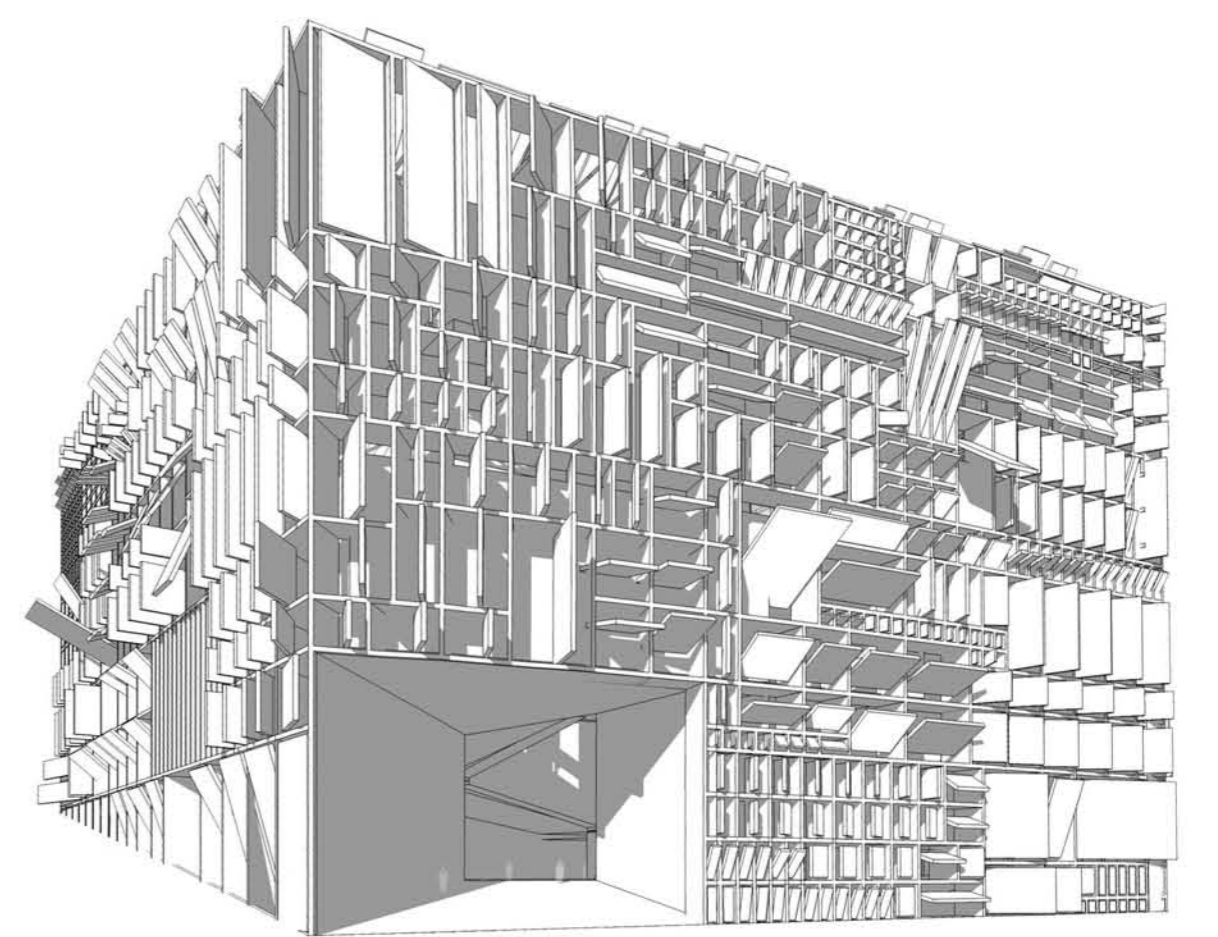
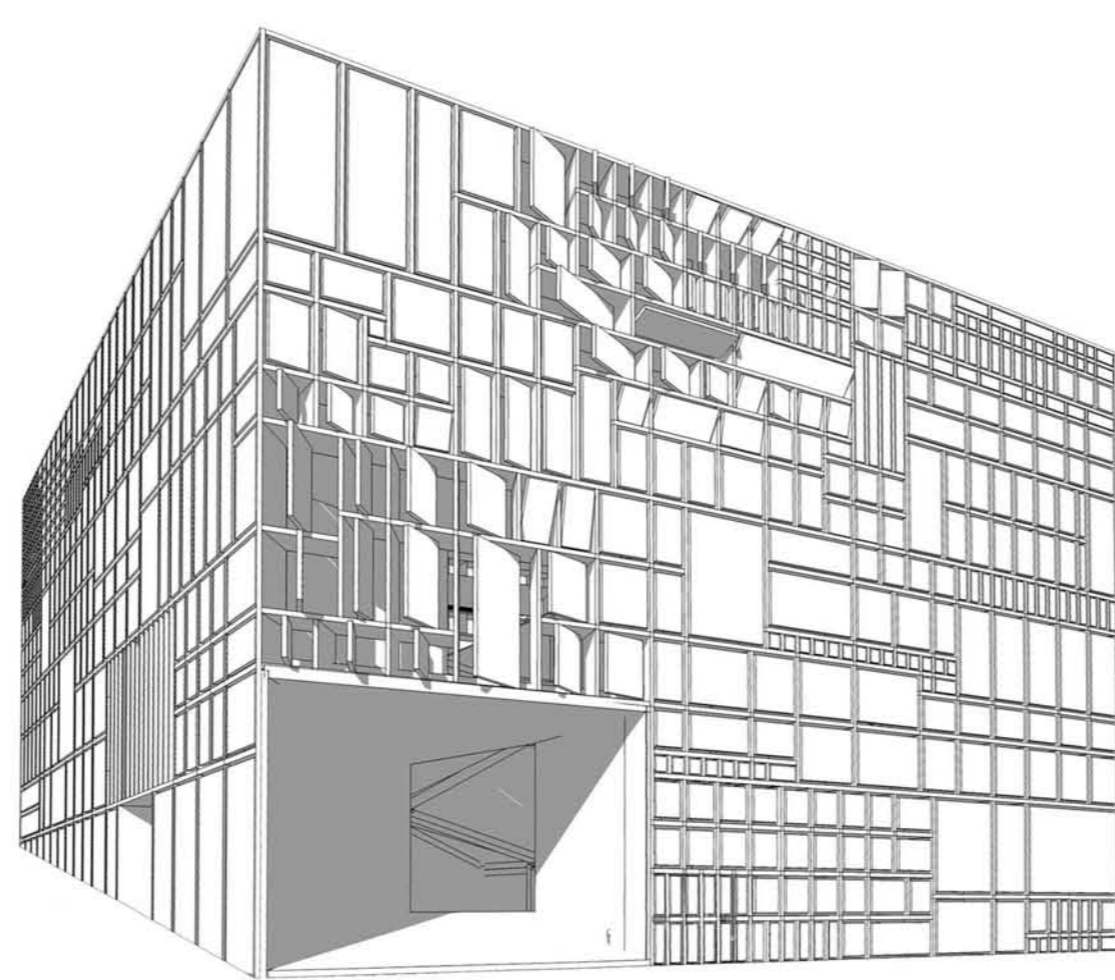
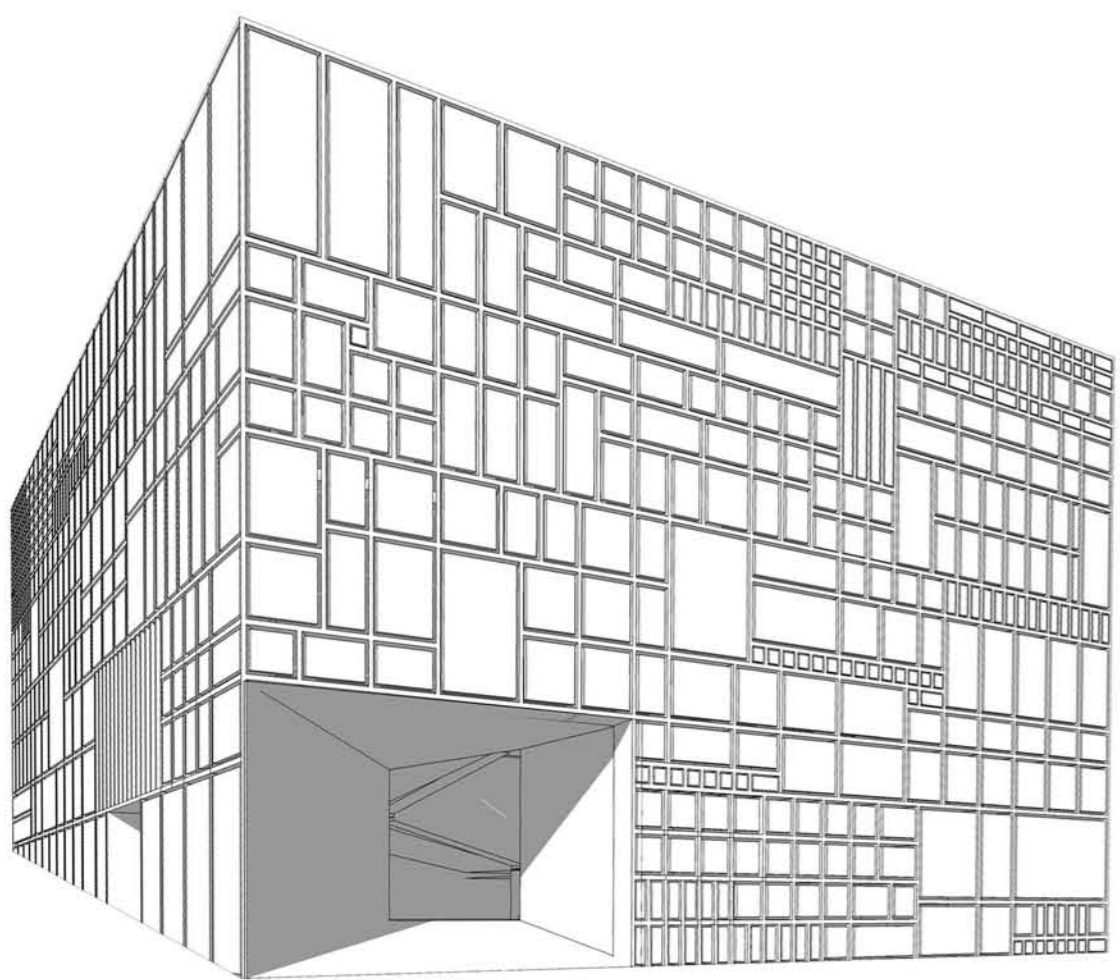
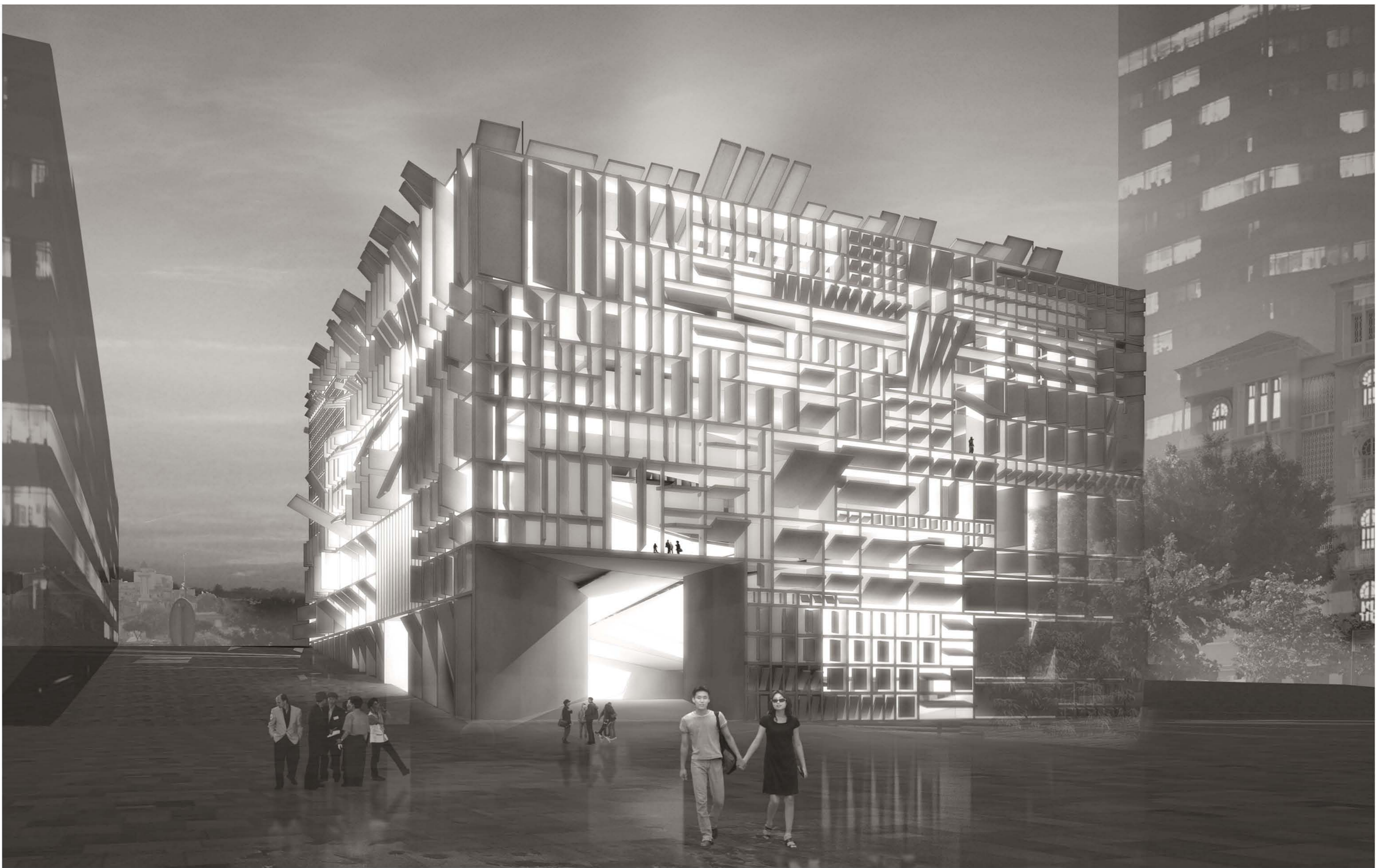
SHOW

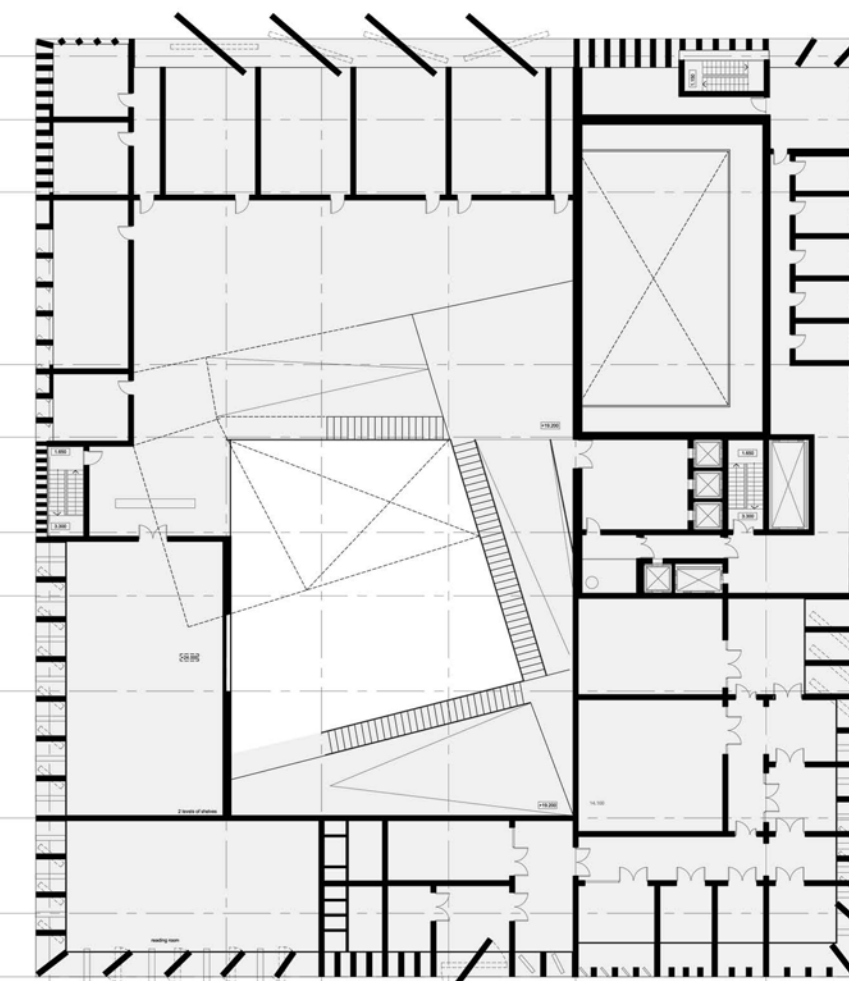
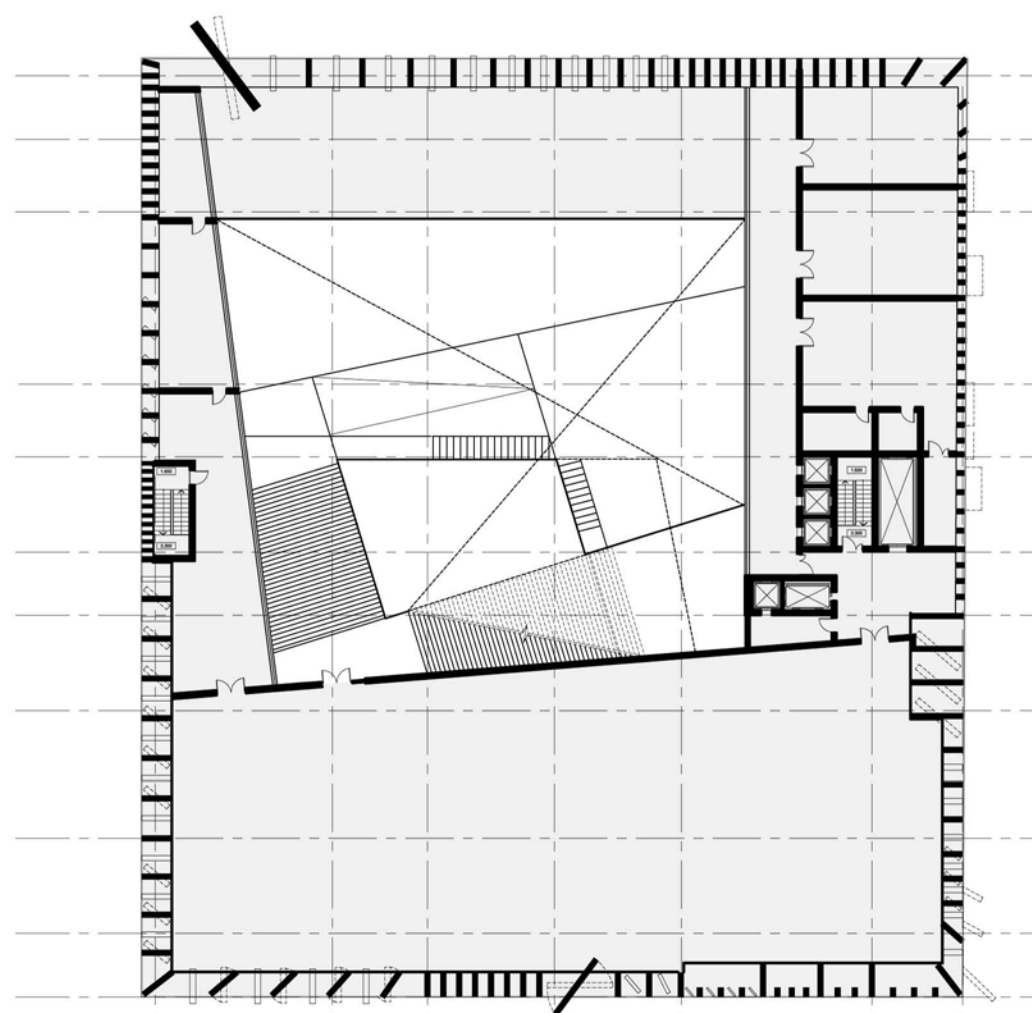
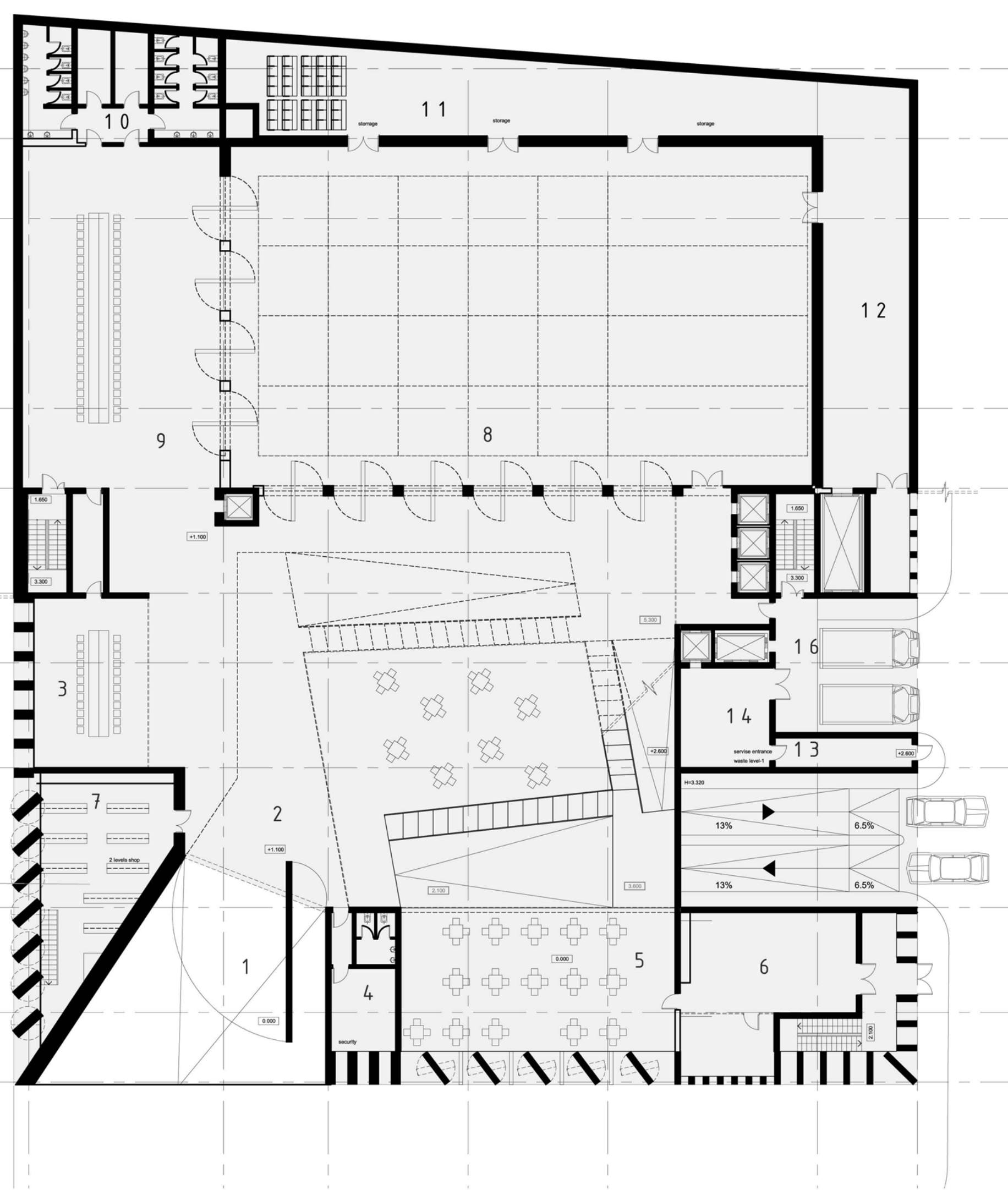
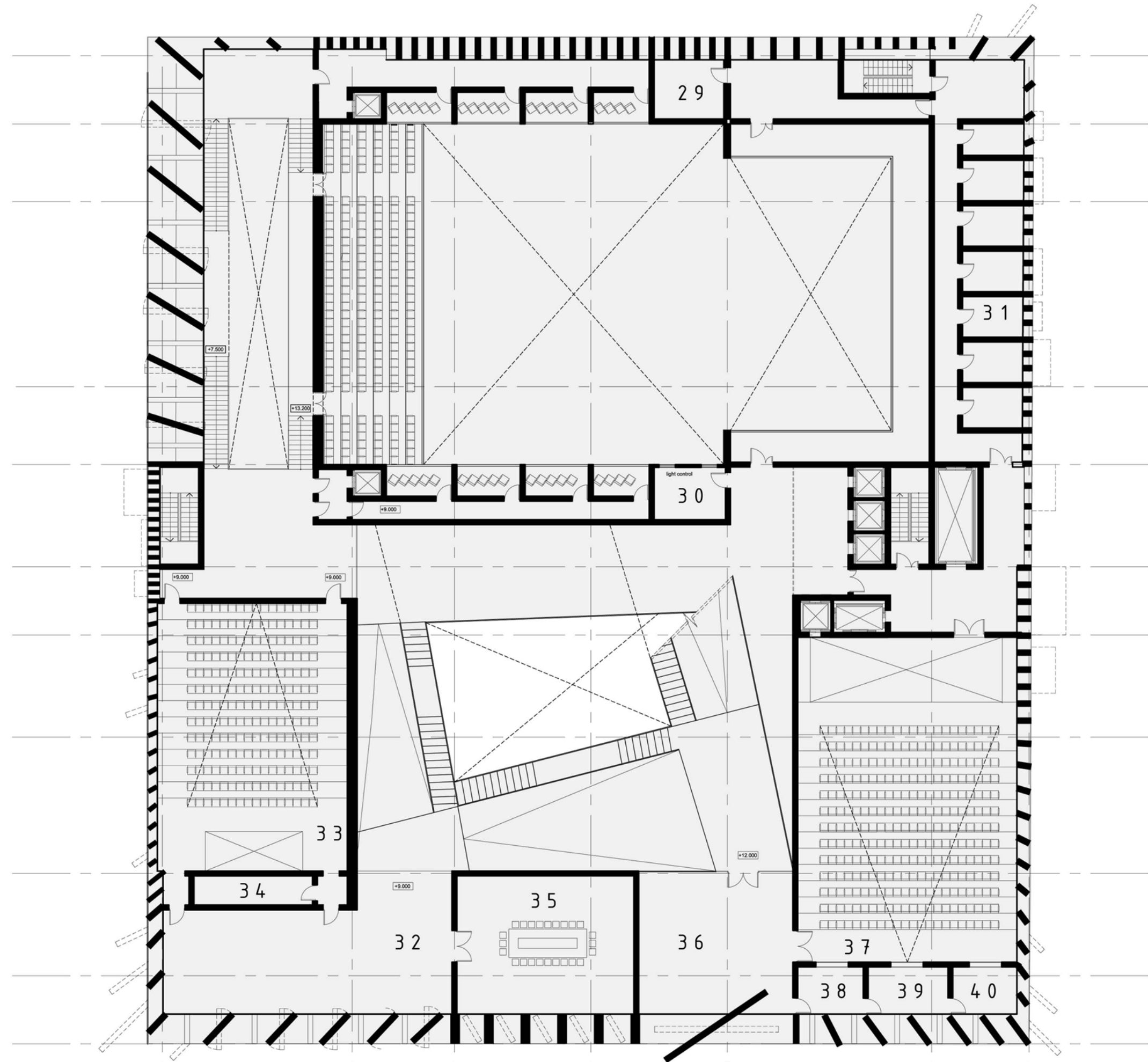
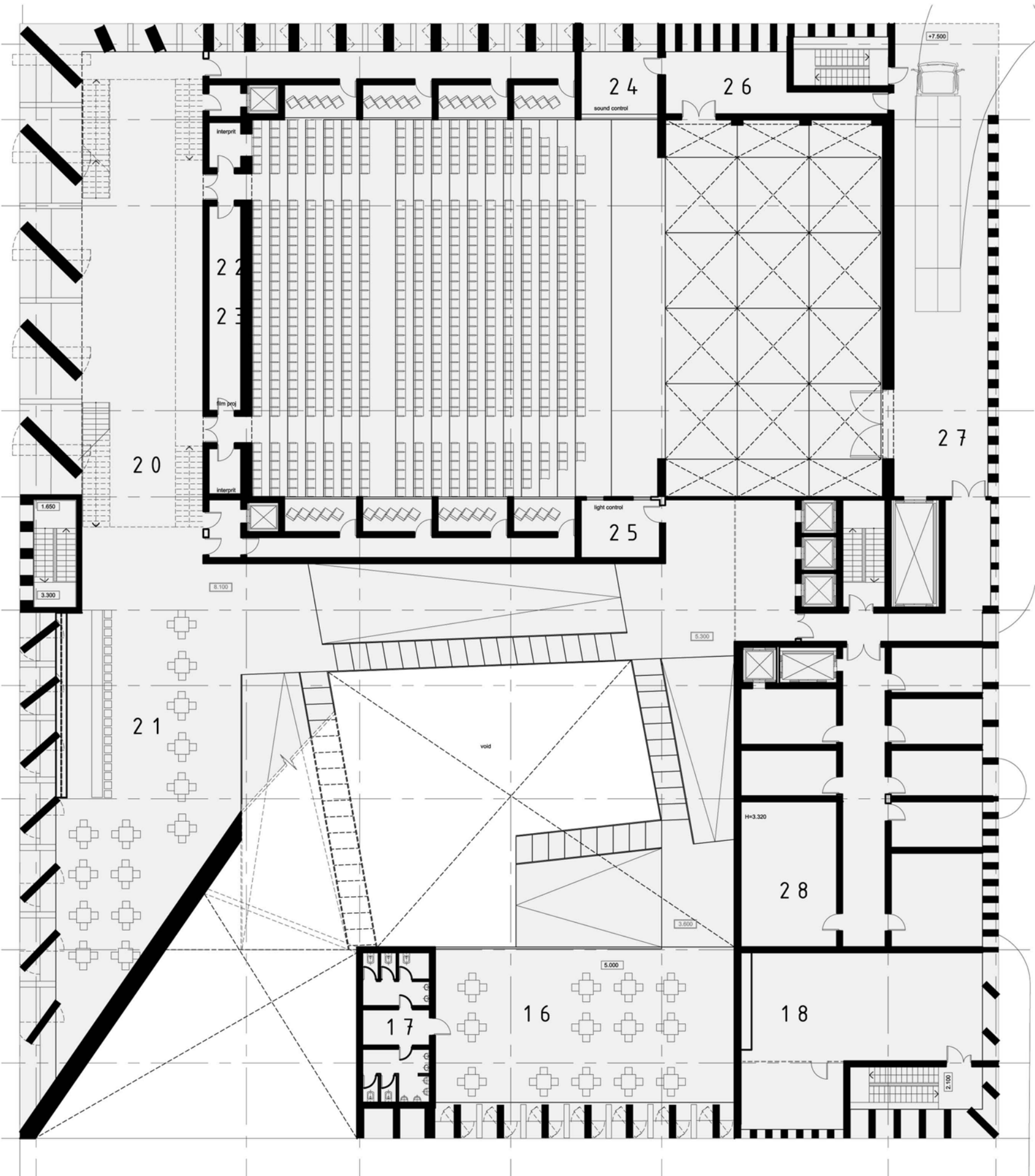
Connected spaces of the open hall and main atrium can be used for concerts, festivals and large installations. An artist can use the whole space of atrium for creation. Amphitheater on the roof is also accessible for public during daytime and at evening for concerts and film shows under the open sky.

LIGHT AND AIR

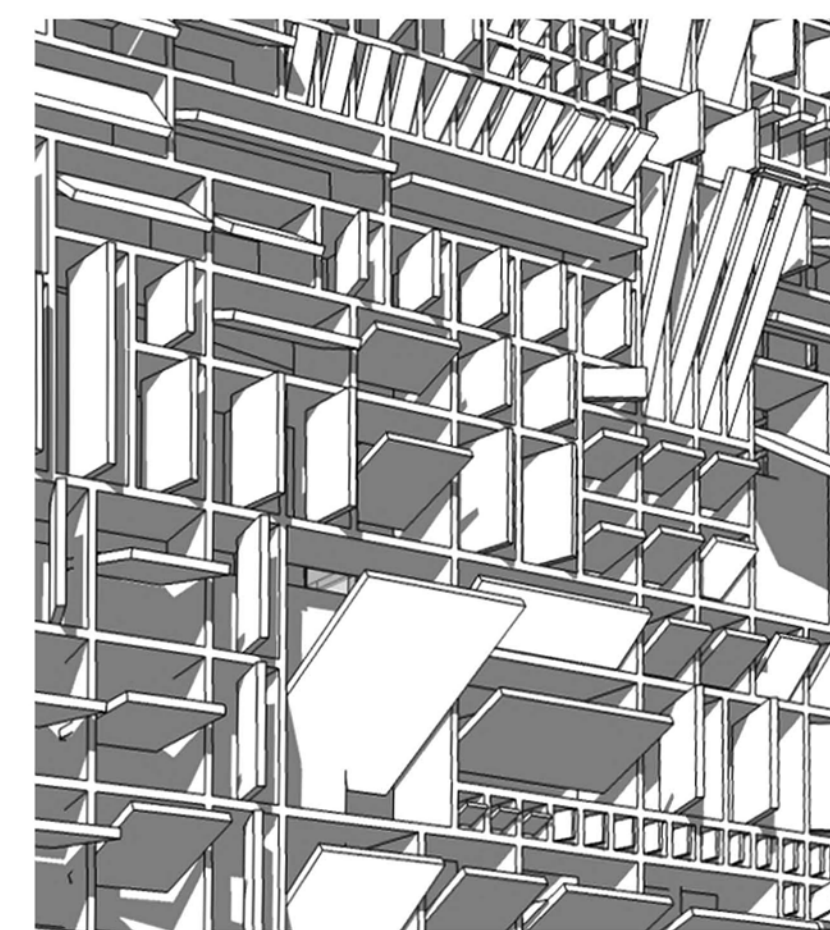
Deep transformable stone facade intended for gradually control of light and air access into the building. Climate and light level in space of inner Street can be controlled by stone slabs rotating without using any engineering systems during a daytime. Necessary climate controlled by ventilation and conditioning system only in concert and exhibition halls. Natural ventilation can be used in case of comfortable outer temperature. Façade lives during a day, depends on weather, permanently changing building face.







1. Entrance
2. Public space (reception hall)
3. Information desk
4. Ticket offices
5. Security room
6. Restaurant
7. Kitchen
8. 2 level Shop & Boutique
9. Covered piazza (transformed performance hall)
10. Bar
11. Public restrooms
12. Storage
13. Workshop
14. Service entrance
15. Staff
16. Delivery
17. Restaurant (2nd level)
18. Public restrooms
19. Kitchen
20. Large Performance hall
21. Foyer
22. Cafeteria
23. Room for film projection
24. Recording room
25. Lighting control room
26. Sound control room
27. Waiting room
28. Theater delivery
29. Dressing rooms
30. Staff
31. Interpretation booths
32. Individual dressing rooms
33. Movie theater foyer
34. Movie Theater
35. Projection room
36. Big meeting room (entrance from movie theatre foyer)
37. Small meeting room (entrance from multimedia hall foyer)
38. Small Multimedia Performance Hall
39. Sound control room
40. Recording room
41. Lounge
42. Dance workshop
43. Theatre and music Workshop
44. Arts workshop
45. Restrooms and showers
46. Foholabs
47. Library Reception desk
48. Reading room
49. Shelves (2 levels)
50. Cinematheque
51. Reception and sorting space
52. Staff Offices
53. Manager of distribution
54. Secretariat
55. Curator
56. Manager of technical services
57. Projection Copies
58. Conservation of positive copies
59. Conservation of printing elements
60. Workshop for copies control
61. Cleaning the copies
62. Workshop
63. Restrooms
64. Individual dressing rooms
65. Rest room
66. Exhibition
67. Workshop



INNER STREET

Wide inner street rises from the entrance to the House to amphitheatre on roof. This open for Beirut residents public place, becomes a new center of communications and connection with a culture. Street space in itself can be used for every kind of urban culture activity – lectures, exhibitions and children lessons. First floor combines in united space of covered town square by transformation of main hall floor. Small hall, cinema, library and exhibition hall are situated around the central public space of the street, which turns into the hall under the open sky. Accessible street space connects different functions as well as ordinary town street would do.

SHOW

Connected spaces of the open hall and main atrium can be used for concerts, festivals and large installations. An artist can use the whole space of atrium for creation. Amphitheater on the roof is also accessible for public during daytime and at evening for concerts and film shows under the open sky.

LIGHT AND AIR

Deep transformable stone facade intended for gradually control of light and air access into the building. Climate and light level in space of inner Street can be controlled by stone slabs rotating without using any engineering systems during a daytime. Necessary climate controlled by ventilation and conditioning system only in concert and exhibition halls. Natural ventilation can be used in case of comfortable outer temperature. Façade lives during a day, depends on weather, permanently changing building face.

HALLS TRANSFORMATIONS

800-seat big hall and 250-seat small hall have full set of transformations. Main hall floor transformation system allows creating common floor level with atrium level.

In case of theater transformation entrance proceeds from second floor foyer. Passenger elevators connecting the entrance zone with all levels of inner street and roof amphitheater. It is possible to install screens for movies demonstrations.

LOGISTICS

Loading of the theater hall by large trucks proceeds from the highway side, as there is larger space for maneuver. Complex loading by small trucks, carriage-entrance and auxiliary entrance. Large cargo elevator connecting loading dock of big, small and exhibition halls. All technical spaces, storerooms and 280-lot parking are situated in underground part.

The stone flower lives in cityscape, reacts on weather changes, time of the day. In heat daytime the flower open only from the north side, fully opened in the cold evening, getting a part of urban culture space