

The aim of the library is to provide the community with a cultural and social space. For this purpose, the proposal focuses on obtaining a functional, attractive and comfortable facility that constitutes a key element of the neighborhood. A central point is intended for the focus of the community access to a public facility without losing the public character.

The building will have a maximum height of 10 meters. The main goal is to create a space that is open and flexible. The main building is intended to be a space that can be used for various activities. The main building is intended to be a space that can be used for various activities. The main building is intended to be a space that can be used for various activities.

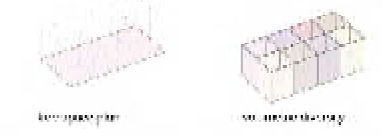
The original volume of the building is divided into eight parts, similar to the surrounding building scale. The library is divided into eight parts, similar to the surrounding building scale. The library is divided into eight parts, similar to the surrounding building scale.

The modular volumes are raised from the ground level to make the circulation and flexible space was possible. As a result of this the space of the library is continuous and flexible. The different volumes are conceived as different nodes in the same time that the space is continuous and the plan is free. It also provides the users with different amount of light.

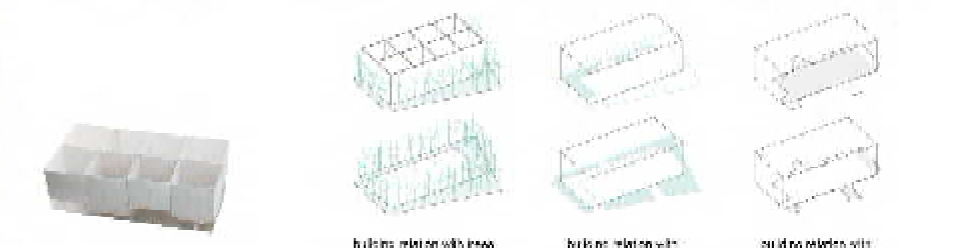


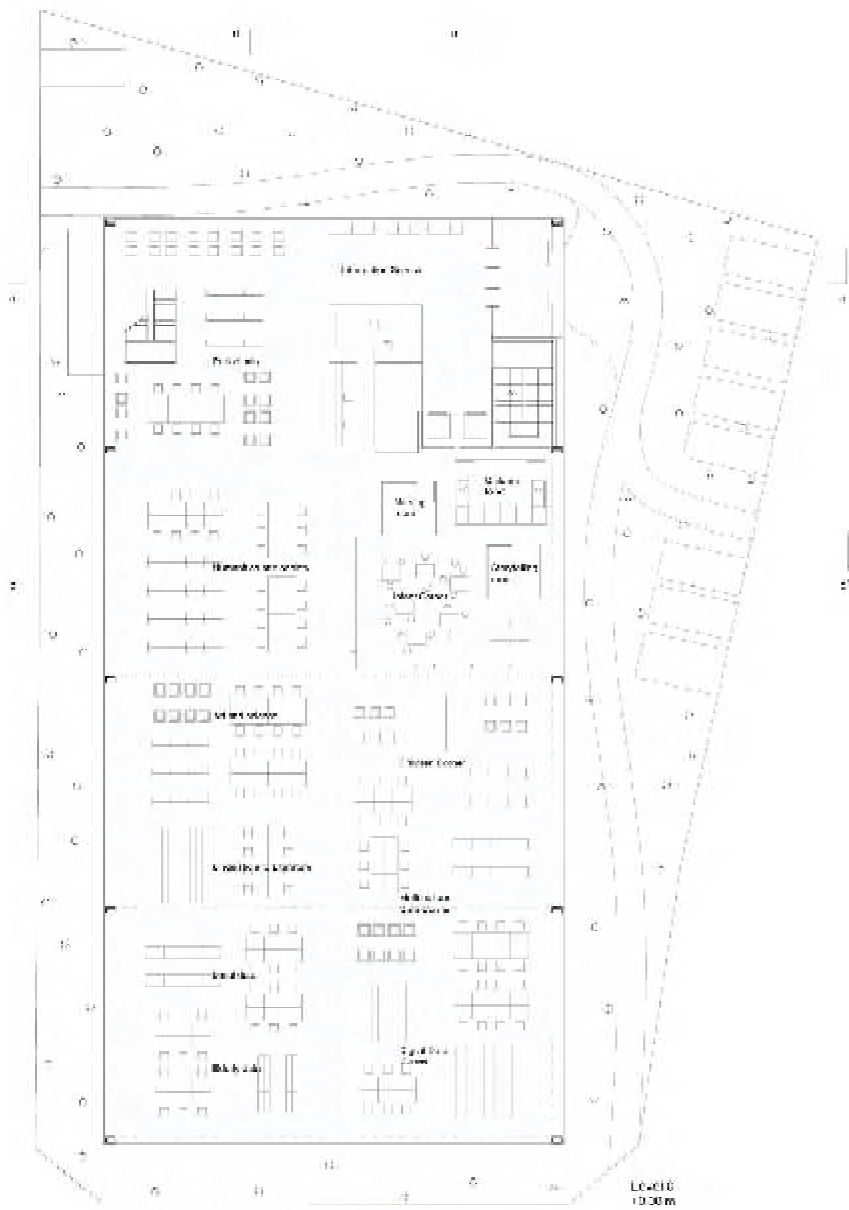
In general, the main volume is raised. The main building is raised from the ground level. The main building is raised from the ground level. The main building is raised from the ground level.

The social and educational facilities are located in the upper floor, with direct access from the main entrance. The office is located under the library space so there are complete functional and program.

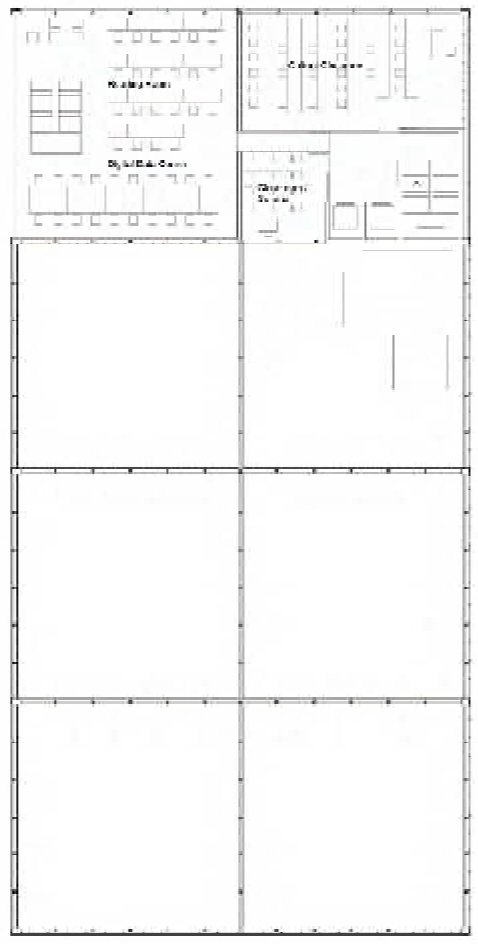


The building is located in a public space, beside a park. The corner of the site is a public space surrounded by trees. The building is placed in the corner to prevent the view from being cut. This also makes it possible to be accessed by the main road by the park.

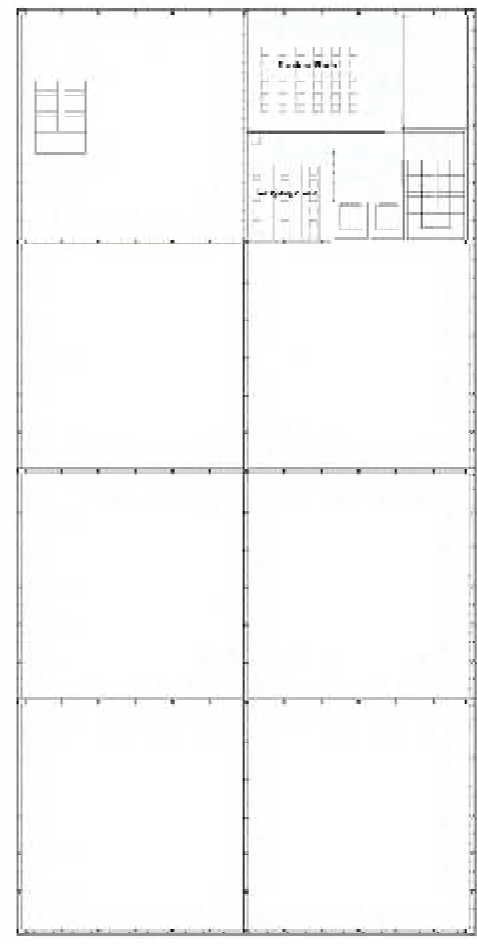




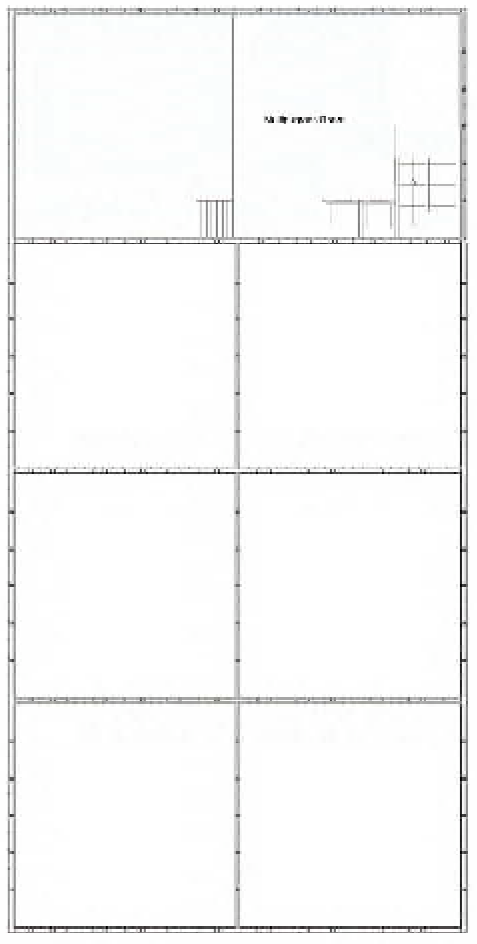
Level 0  
0.00 m



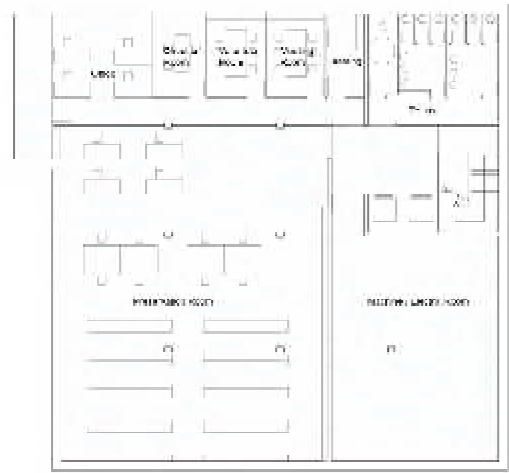
Level 1  
-2.10 m



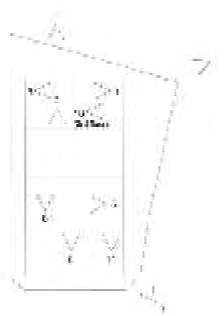
Level 2  
-4.00 m



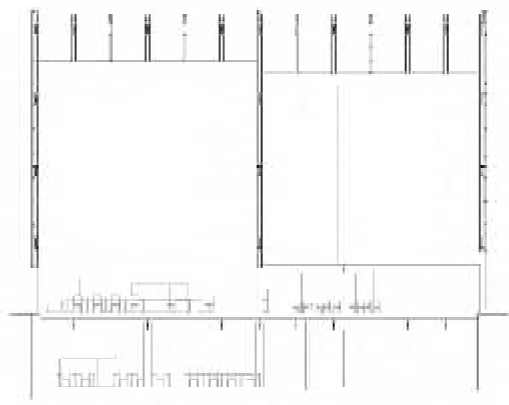
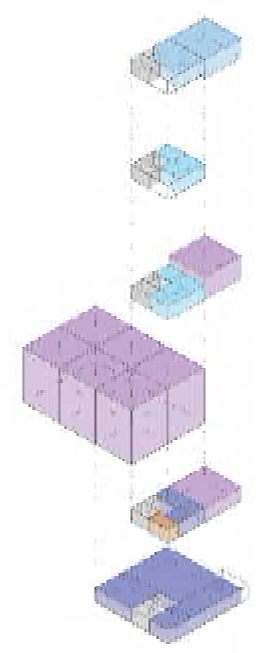
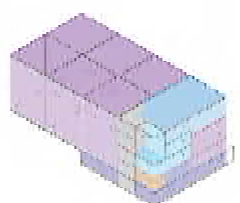
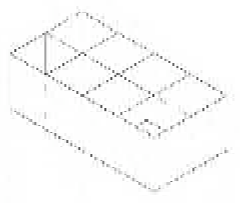
Level 3  
-5.20 m



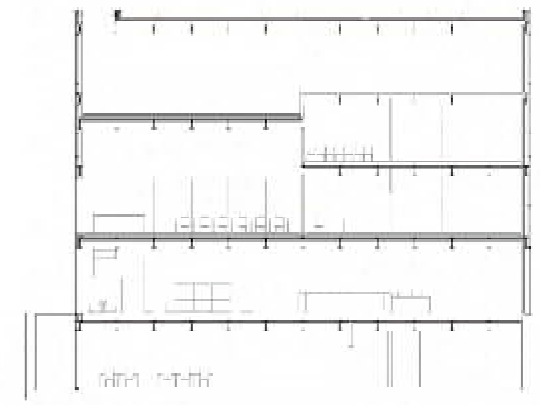
Level -1  
-4.60 m



- Multi-purpose Room
- Living Study Room
- Open user space
- Office / Workstation Space
- Information
- Access



Section 1

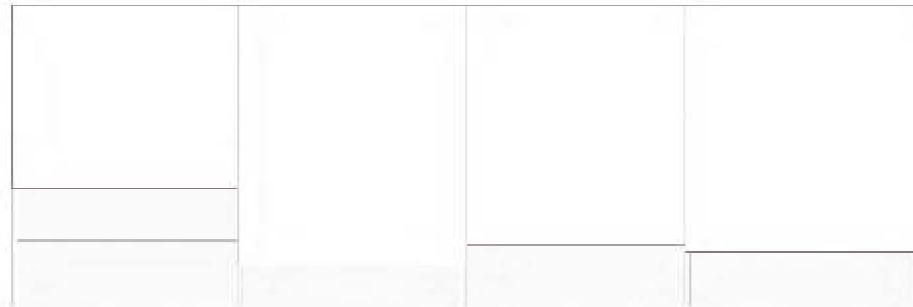


Section 2





Section 01



West Elevation



1



2

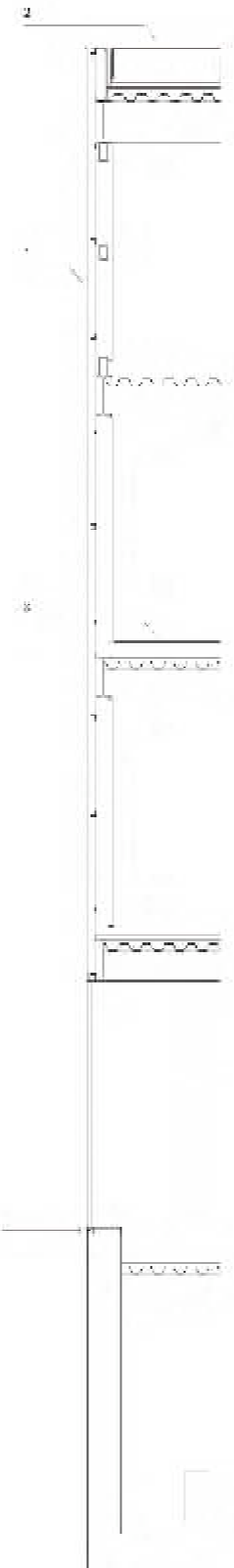


3



4

- 1. Façade
  - Steel panel
  - PVC panel
  - Metal cladding
  - Glass panel
  - Aluminum panel
- 2. Floor
  - Steel panel
  - Aluminum panel
  - Concrete panel
  - PVC panel
  - Metal cladding
  - Glass panel
  - Aluminum panel
- 3. Roof
  - Steel panel
  - PVC panel
  - Metal cladding
  - Glass panel
  - Aluminum panel



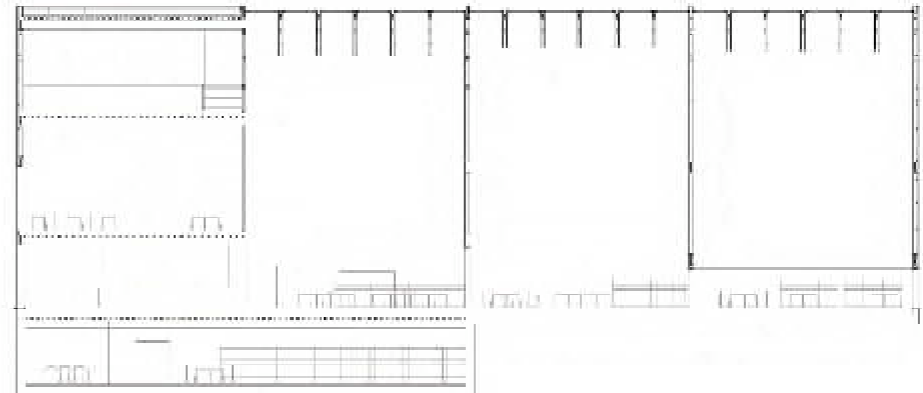
Façade Section 1/50



5



6



Section 02



East Elevation



South Elevation

North Elevation